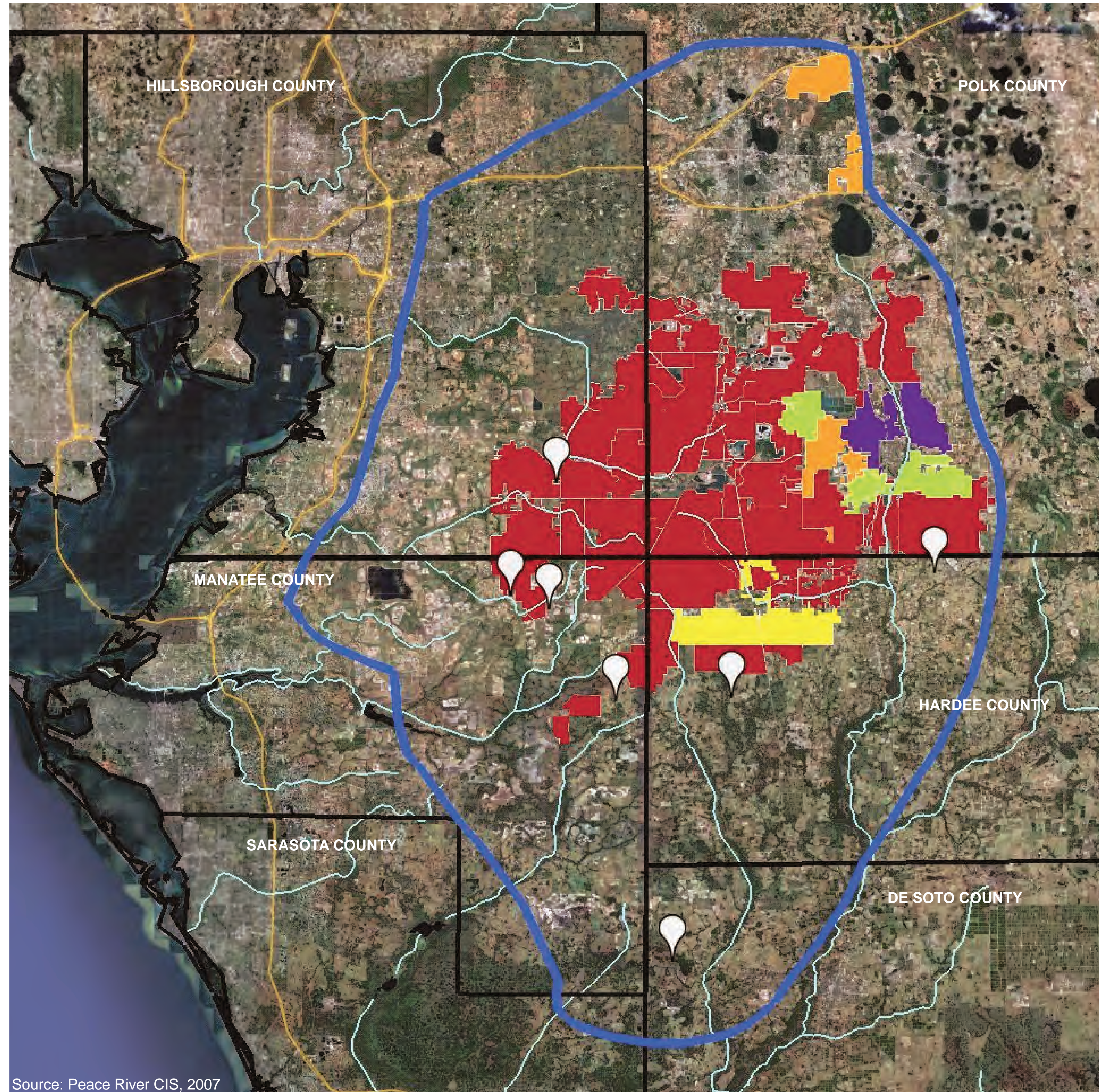
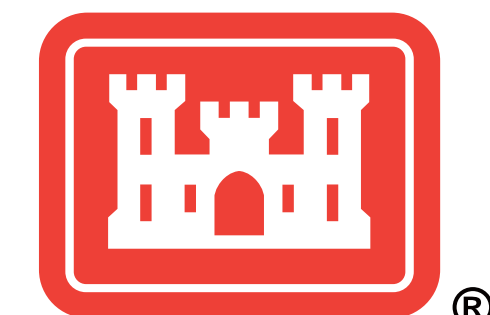


# NEPA Processes and AEIS Overview

## Phosphate Mining in the Central Florida Phosphate District



- Legend**
- Central Florida Phosphate District Boundary
  - Proposed Mine Locations
- Existing Mine Locations by Company:**
- Mosaic
  - U.S. Agri-Chemicals
  - Estech
  - Mobil-Exxon
  - CF Industries



US Army Corps of Engineers  
**BUILDING STRONG**

North  
 Not to Scale

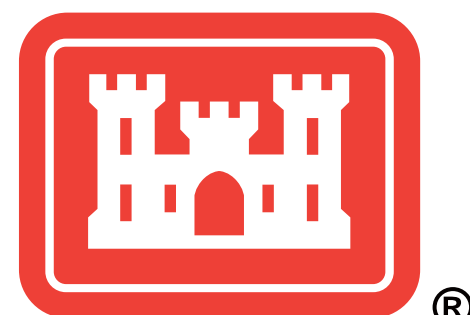
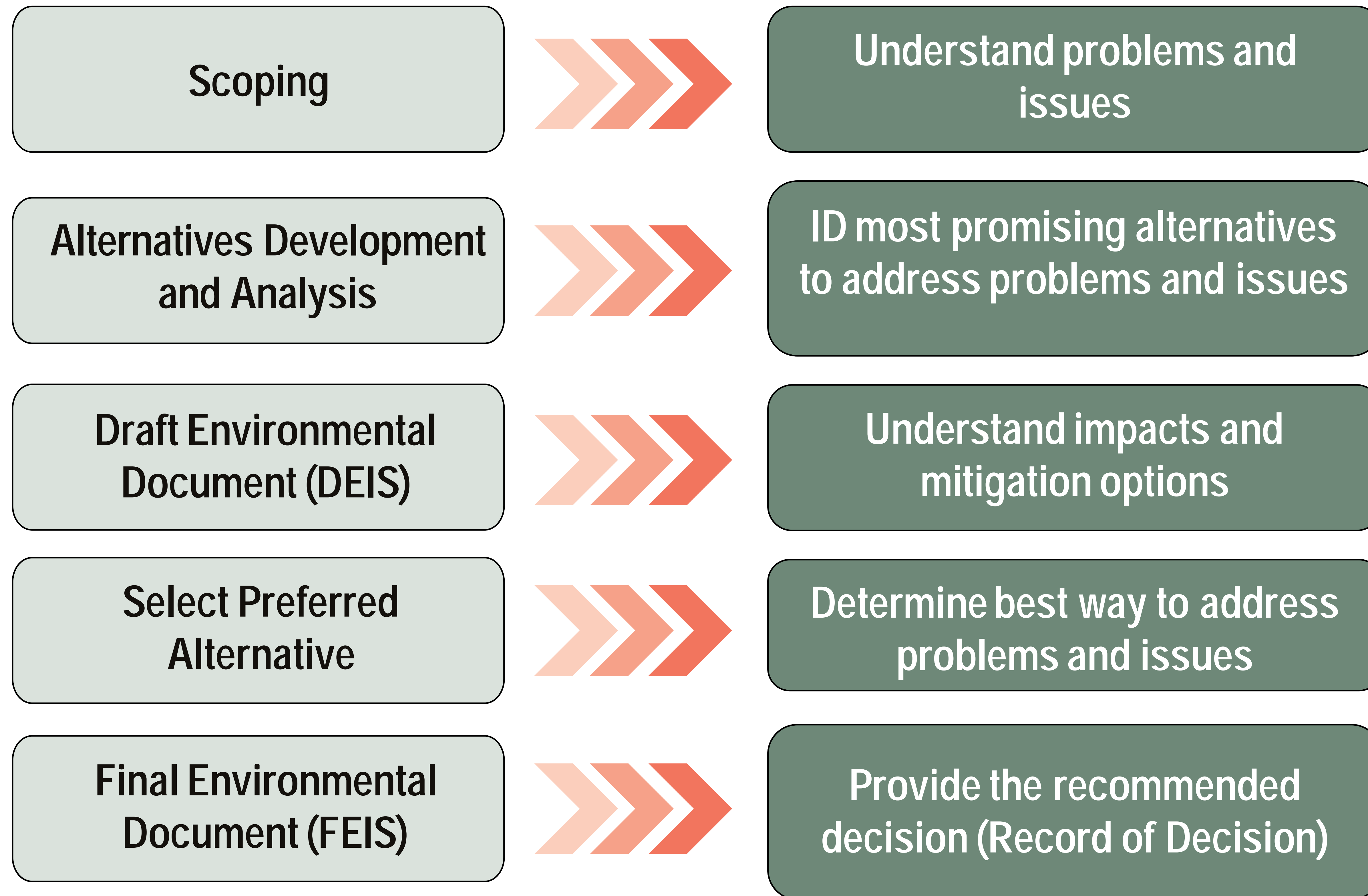
Source: Peace River CIS, 2007

Areawide Environmental Impact Statement for Continued Phosphate Mining in the Central Florida Phosphate District

**CH2MHILL.**

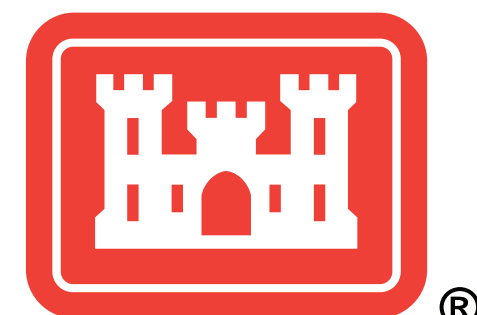
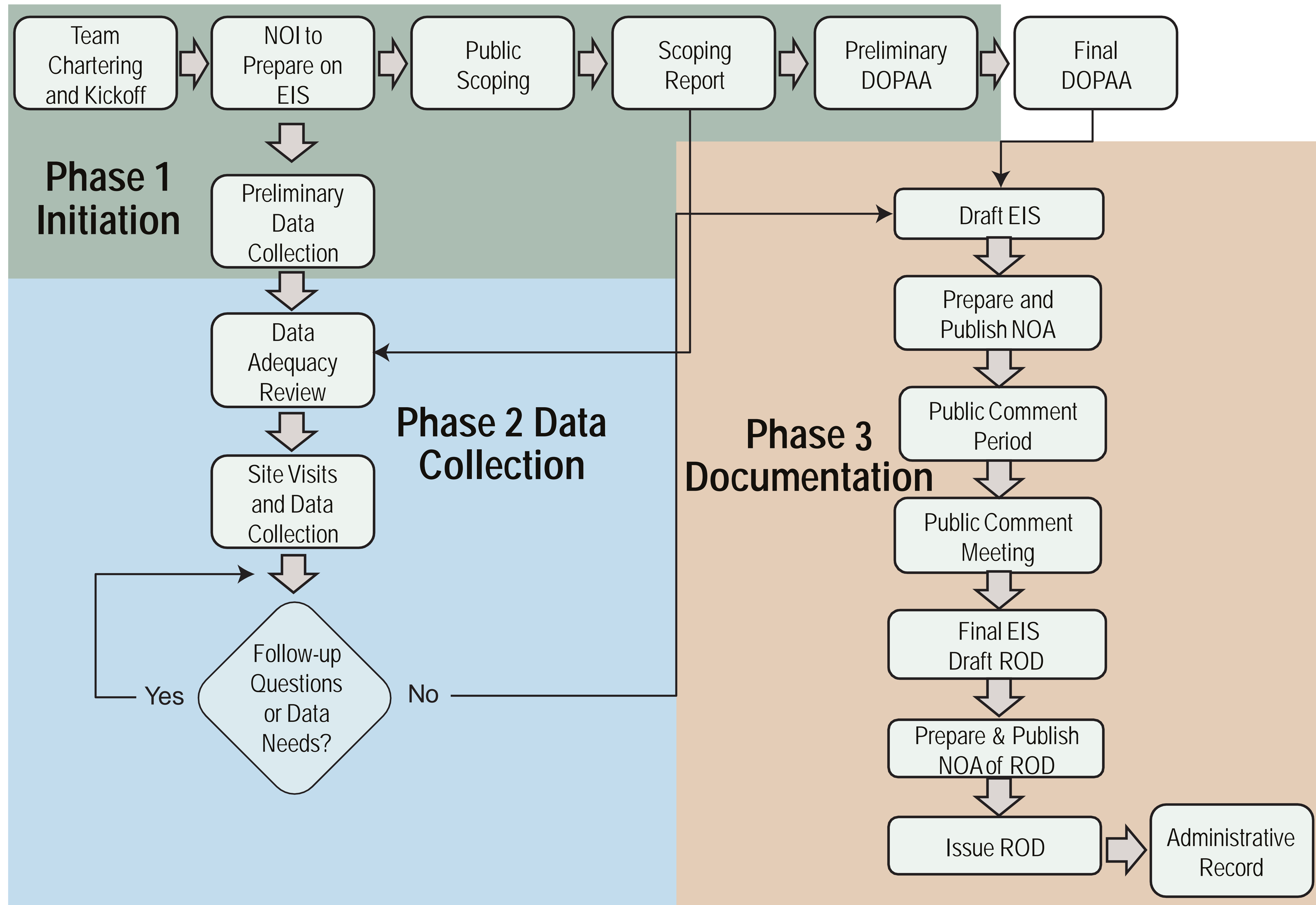
# NEPA Processes and AEIS Overview

## Decision Process



# NEPA Processes and AEIS Overview

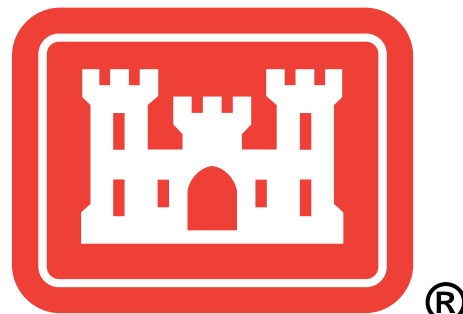
## The Phosphate Mining AEIS Process Now Underway



## NEPA Processes and AEIS Overview

### Broad Issues Identified for Consideration (Input during 2010)

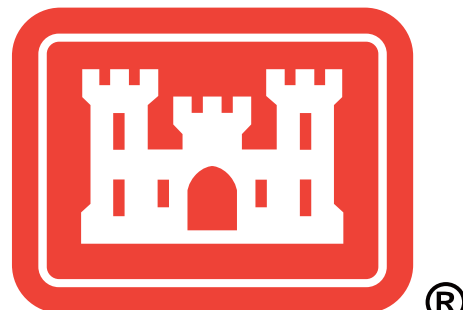
- Surface water and groundwater hydrology
- Surface water and groundwater quality
- Water supply and conservation
- Wetlands impacts and mitigation
- Aquatic and terrestrial communities and habitats
- Federally listed protected species
- Mine reclamation and mitigation
- Public health and safety
- Energy needs
- Mineral needs
- Soils and geology
- Environmental Justice
- Land use
- Transportation
- Recreation
- Water supply and conservation
- Historic, cultural, and archaeological resources
- Greenhouse gases and climate change
- Energy needs
- Mineral needs
- Radiation
- Aesthetics
- Socioeconomics



## NEPA Processes and AEIS Overview

### Direct, Indirect, & Cumulative Impacts

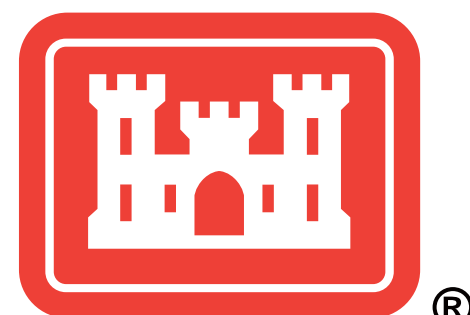
- Direct effects of the proposed action occur at the same time and place as the action.
- Indirect effects are reasonably foreseeable effects caused by the action that occur later in time or farther in distance, such as changes in land use patterns, effects on air, water, or natural resources.
- Cumulative effects are those which result from the incremental impact of the action when added to other past, present, and reasonably foreseeable future actions.



## NEPA Processes and AEIS Overview






### General Schedule

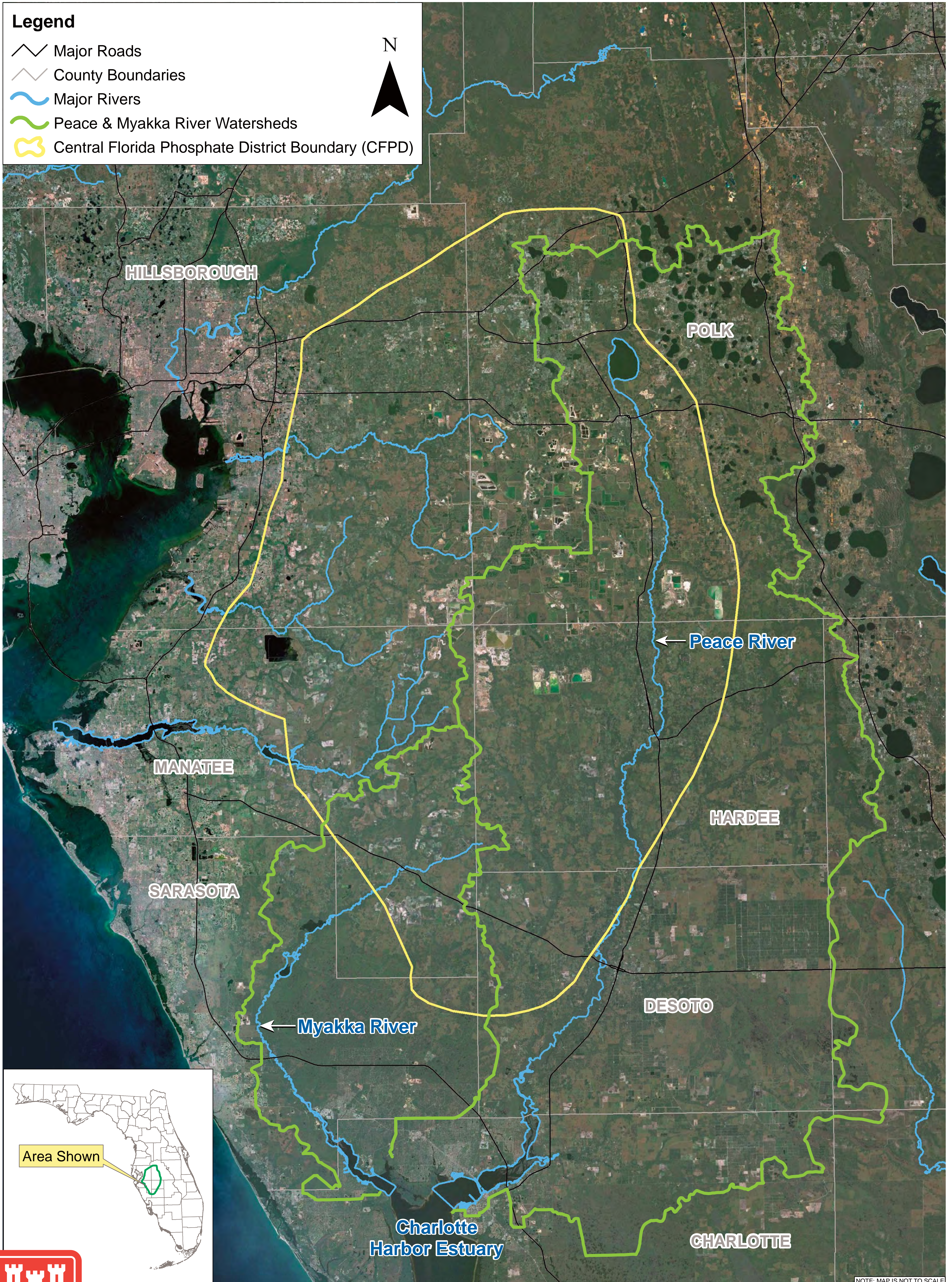
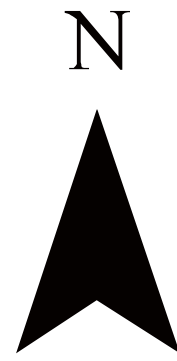
- **Formal start:** February 3, 2011
- **Notice of Intent in Federal Register:** February 18, 2011
- **Scoping Meetings**
  - March 23, 2011: Lakeland
  - March 25, 2011: Punta Gorda
- **Scoping Comments Period ends** ~April 25, 2011
- **Anticipated key future milestones:**
  - Notice of Availability of the DAEIS ~ end of October 2011
  - Two public hearings regarding DAEIS ~mid December 2011
  - Notice of Availability of the FAEIS ~August 2012
  - Record of Decision ~by end of 2012



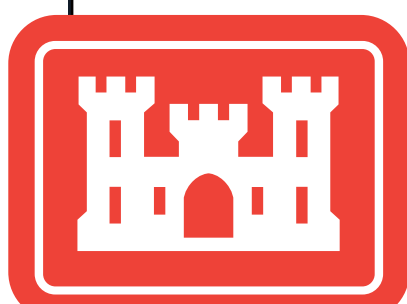
# Location of the Central Florida Phosphate District in Relation to the Peace and Myakka River Watersheds

## Legend

-  Major Roads
-  County Boundaries
-  Major Rivers
-  Peace & Myakka River Watersheds
-  Central Florida Phosphate District Boundary (CFPD)



NOTE: MAP IS NOT TO SCALE



US Army Corps of Engineers  
**BUILDING STRONG**

Areawide Environmental Impact Statement for Continued  
Phosphate Mining in the Central Florida Phosphate District

**CH2MHILL.**